

# Cathedral Basilica of Our Lady of Peace



1184 Bishop Street, Honolulu, HI 96813

Phone: 808.536.7036 † [www.honolulucathedral.org](http://www.honolulucathedral.org) † [coolop@rcchawaii.org](mailto:coolop@rcchawaii.org)

**Rector**

Rev. Pascual Abaya IV

[pabaya@rcchawaii.org](mailto:pabaya@rcchawaii.org)

**Parochial Vicar**

Rev. Lazarus Anondee

[lanondee@rcchawaii.org](mailto:lanondee@rcchawaii.org)

**In Residence**

Rev. Gregorio Honorio

Rev. Joe "Bong" Diaz

**Deacon**

Dcn. Joe Almuenza

[jalmuenza@rcchawaii.org](mailto:jalmuenza@rcchawaii.org)

**Office Coordinator**

Joseph Ramos

[jramos@rcchawaii.org](mailto:jramos@rcchawaii.org)

**Director of Music**

Calvin Liu

[calvin@rcchawaii.org](mailto:calvin@rcchawaii.org)

**Religious Education Coordinator**

Michael Bauer

[mbauer@rcchawaii.org](mailto:mbauer@rcchawaii.org)

**NOVEMBER 3, 2024**  
**31<sup>ST</sup> SUNDAY IN ORDINARY TIME**



**MASS SCHEDULE**

Monday - Friday: 6:30 a.m.  
& 12:00 p.m.

Saturday: 7:00 a.m.  
& 12:00 p.m.

Saturday Vigil: 5:00 p.m.  
(Fulfills Sunday Obligation)

Sunday: 6:00 a.m., 8:00 a.m.,  
10:00 a.m., 12:00 p.m.  
& 6:00 p.m.

**RECONCILIATION**

Wednesday & Saturday  
10:00 a.m. - 11:00 a.m.  
(unless noted in bulletin)

**Devotions**

First Friday

Adoration/Benediction  
at 10:00 a.m.

First Saturday

Adoration after 7:00 a.m. Mass  
(unless noted in bulletin)

**PARISH OFFICE**

MONDAY through FRIDAY  
8 a.m. to 4 p.m.  
Closed on holidays

1184 Bishop Street  
Honolulu, HI 96813

Office: (808) 536-7036

Fax: (808) 585-3383

email: [coolop@rcchawaii.org](mailto:coolop@rcchawaii.org)

[www.honolulucathedral.org](http://www.honolulucathedral.org)

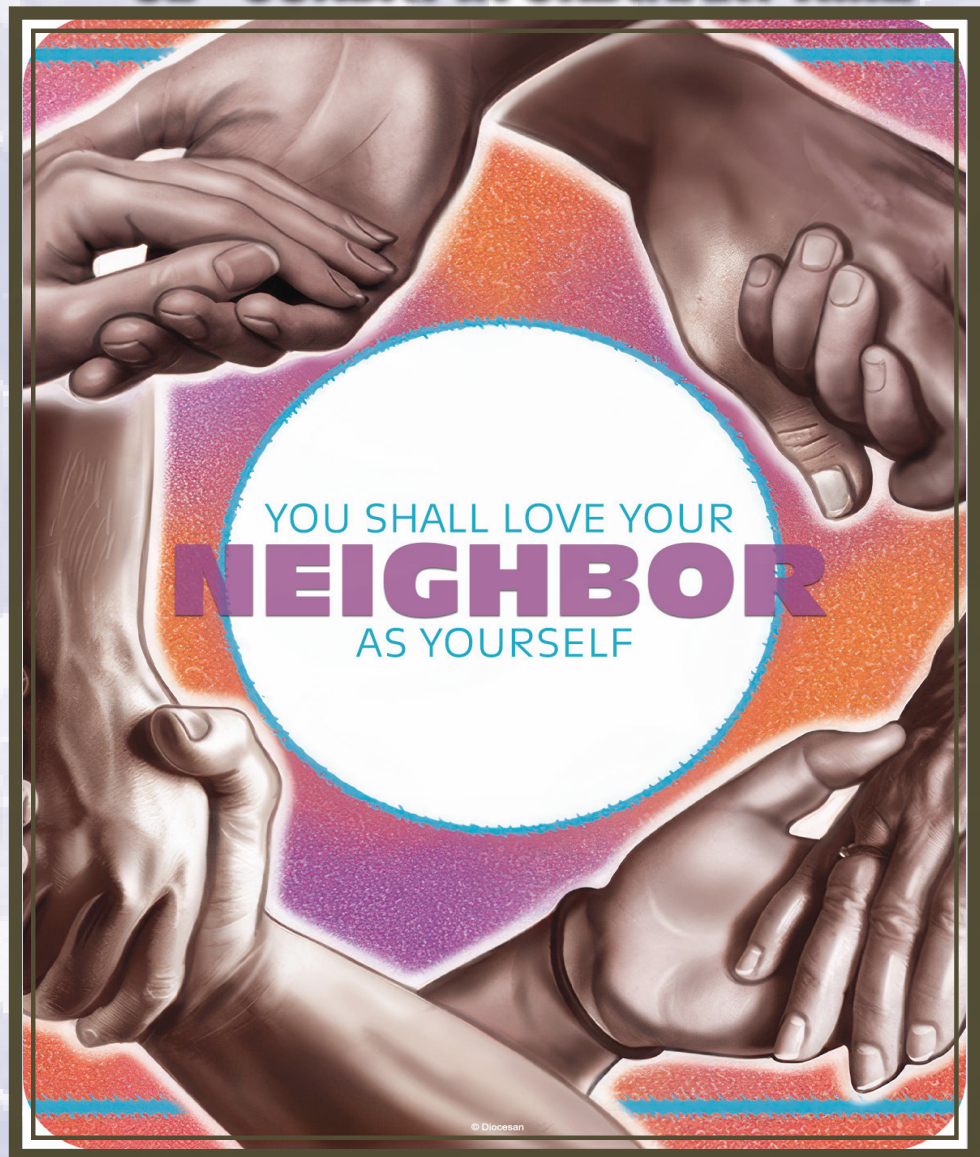


Photo - Copyright © 2024 Diocesan

**This week's Readings:** Deuteronomy 6:2-6; Psalm 18:2-3, 3-4, 47, 51;  
Hebrews 7:23-28; Alleluia - John 14:23; Mark 12:28b-34

**Next week's Readings:** 1 Kings 17:10-16; Psalm 146:7, 8-9, 9-10;  
Hebrews 9:24-28; Alleluia - Matthew 5:3; Mark 12:38-44 or 12:41-44

**"WITH ALL YOUR HEART"**

Beloved Disciples of Christ,

Greetings of peace, love, and joy!

If I may ask, what is your favorite love song? I would like to make a good guess. Most of us have one, or maybe all of us. In grade school, the first love song I learned was the song by Elvis Presley, *Wooden Heart*. The song expresses that the heart is not made of wood and can hurt and wishes to be treated like one is treated with love.

How wonderful it is to hear someone saying "with all my heart" to you. It connotes deep love and affection. It expresses a profound feeling of kind-heartedness, care, concern, and fondness for the beloved. If true love exists, reciprocity can take place. When this happens, the lover and the beloved will deepen their understanding of each other, and commitments can occur. When there is commitment, sacrifices can be made, thus enabling each other to share their responsibilities.

God's love for us is so immense and profound. In His faithfulness, He sent His Son into the world. Jesus Christ is the expression of His love, precisely when He offered His own life for our sake and salvation. We are the beloved of God. We are so much loved that we cannot just ignore it. Instead, we do as best as possible to love God in return by keeping His Commandments: "You shall love the Lord your God with all your heart, soul, mind, and strength." And He goes on to say, "You shall love your neighbor as yourself."

Every single day of our lives is a moment to show that love. As we wake up in the morning till the end of the day, our minds and hearts are focused on the things that can manifest such love. We are all given responsibilities in life. As human beings, we are here to take care of everything God has given us, our world, our lives, and our care for our brothers and sisters. Love of God and Neighbor motivate us to be faithful to our calling as sons and daughters of the Father, disciples of Christ, and temples of the Holy Spirit. We are gifted with the precepts of our Church that leads us to a life of righteousness and faithfulness. The sad reality is that we continue to impose our own will and not the will of our Father in Heaven. Jesus exemplified how to submit everything to His Father because that is how much He loves and trusts Him. More often than not, we have a wooden heart that does not know that we are hurting the ones we love, especially our good and faithful God.

When true love exists, there is beauty in life. When there is beauty, there is joy. When there is joy, there is peace. All these come from loving with all your heart.

Your friend in Jesus,

**Fr. Pascual Abaya IV**

**Rector**



**YOU SHALL  
LOVE THE LORD  
YOUR GOD  
WITH ALL  
YOUR HEART  
MARK 12:30**

# Thirty-first Sunday in Ordinary Time

## CHURCH'S CALENDAR THIS WEEK

Sunday, November 3  
**31<sup>st</sup> Sunday in Ordinary Time**  
 Masses at 6:00/8:00/10:00am/12:00pm/6:00pm  
 Live-Streamed Mass at 10:00 a.m.

Monday, November 4  
**Memorial of St. Charles Borromeo**  
 Masses at 6:30am & 12:00pm

Tuesday, November 5  
 Tuesday of the 31<sup>st</sup> Week in Ordinary Time  
 Masses at 6:30am & 12:00pm

Wednesday, November 6  
 Wednesday of the 31<sup>st</sup> Week in Ordinary Time  
 Sacrament of Reconciliation at 10:00am  
 Masses at 6:30am & 12:00pm

Thursday, November 7  
 Thursday of the 31<sup>st</sup> Week in Ordinary Time  
 Masses at 6:30am & 12:00pm

Friday, November 8  
 Friday of the 31<sup>st</sup> Week in Ordinary Time  
 Masses at 6:30am & 12:00pm

Saturday, November 29  
**Feast of the Dedication of the Lateran Basilica**  
 Mass & Adoration at 7:00am  
 Sacrament of Reconciliation at 10:00am  
 Mass at 12:00pm  
 Vigil Mass at 5:00pm

Sunday, November 10  
**32<sup>nd</sup> Sunday in Ordinary Time**  
**2<sup>nd</sup> Collection for Ohana in Christ**  
 Masses at 6:00/8:00/10:00am/12:00pm/6:00pm  
 Live-Streamed Mass at 10:00 a.m.

## SCRIPTURE

At the doorway of an observant Jewish home, you'll find a mezuzah that holds a miniature scroll on which is inscribed the text Jesus quotes today from the Book of Deuteronomy, known as the Shema. If words can define a people, then these words define Israel. As Americans, perhaps the closest comparison would be the Declaration of Independence. But the Shema does more than inspire or form the basis of a political philosophy. It marks the people who embrace it, brands them as they "take [these words] to heart" (Deuteronomy 6:6,) and establishes a relationship with God that gives them an indelible identity.

For Jesus, as for Moses, this is the first and greatest commandment. But Jesus offers more than what was asked: the second commandment, he says, requires love of neighbor. As the New Testament expounds in various ways, we are liars if we claim to love God and hate our neighbor, for love of neighbor demonstrates and proves our love of God. These two commandments are the bedrock on which true faith and true religion stand — lose, or even weaken, one and the building crumbles. Mark takes the time to have the scribe repeat the verses and underscore them by asserting that love of God and neighbor is worth more than any sacrifice. That insight brings the scribe to the very threshold of the kingdom.

## SHARING FAITH

How does the command to love God and neighbor make the other commandments seem all the more important?

When you think of the commandments, do you think more of inhibiting laws, or instructions for loving?

What does it mean to love God with your whole heart, soul, mind, and strength? What does it mean to love your neighbor as yourself?

## LIVING THE LITURGY

Practice love of God with your heart by doing an unsolicited "random act of kindness" for someone.

Practice love of God with your mind by reading a short article on a spiritual or theological subject (a quick Internet search will yield thousands of possibilities).

Practice love of God with your strength by making yourself do something you should do but don't like to do, such as volunteering at a social service agency, engaging in a particular devotion, or doing something kind for someone who you find difficult to be around.

## REFLECTION

"Take to heart these words which I enjoin on you today" (Deuteronomy 6:6).



**ICSC STEWARDSHIP PRAYER**

Mission statement  
The mission of the **International Catholic Stewardship Council** is to foster an environment in which stewardship is understood. Throughout the Catholic Church.

Gracious and loving God,

As the autumn season continues its transformation; and the days become shorter, the earth cooler; as we anticipate joining family and friends in joyful celebration on Thanksgiving Day, we pause to give You thanks and praise for the abundant blessings You have bestowed upon us:

For life and health, safety and comfort, food and nourishment, we are sincerely grateful.

Through your Spirit, open our hearts so that we may be even better stewards of these rich and unmerited gifts.

Show us how to be a blessing for the poor, sick, lonely and all who suffer.

And help us nurture the gift of faith, revealed to us by your Son, Jesus Christ, our greatest gift, who lives and reigns with You and the Holy Spirit, God forever and ever.

Amen.

**STEWARDSHIP OF TREASURE**

October 21 - 27, 2024

**Offertory Collection**

Sunday	\$ 4,662.80
Weekday	\$ 721.11
Other Feasts, Solemnities + All Soul	\$ 834.22
Online Giving	\$ 3,271.65
<b>Total Offertory</b>	<b>\$ 10,498.78</b>

**Other Collection**

Repairs & Maintenance	\$ 315.00
Diocesan Collection + OIC	\$ 5,484.19
Special Collection (Intentions, etc.)	\$ 1,081.00
Other Collection (Gallery, etc.)	\$ 443.00
<b>Total</b>	<b>\$ 17,812.06</b>

**ADULT FAITH FORMATION**

Please join Dcn. Joe and Easter for Adult Faith Formation every 3<sup>rd</sup> Sunday of the month. Please see resources that are available at **FORMED**. On your browser, go to [www.formed.org](http://www.formed.org). Sign up as a "Parishioner", choose "RCCHAWAII" and create an account.



Please help support the Cathedral Basilica and our many Catholic ministries and services by contributing to the **2024-2025 'Ohana In Christ Appeal**. Our goal last year was not met. Catholic Church in Hawaii has many dimensions and continues to make significant impact in the communities we serve. Your generous gift will especially help support numerous ministries and services at our parishes, schools and beyond - as well as our Parish Priests and Deacons, Youth and Young Adult Ministry and those most in need. Mahalo for your generous Stewardship of Treasure. All gifts are important and appreciated. Please give online at [CatholicHawaii.org](http://CatholicHawaii.org). For more information on how you can give, please call the office at 808-536-7036. Thank you!

**CATHEDRAL'S BOOK OF MEMORIES**

Submit stories about your memories of the Cathedral Basilica of Our Lady of Peace. The book will be dedicated to Bishop Larry. All proceeds of sales of this book will go to the completion of the restoration of our Cathedral. Send stories of about 500 words to Easter Almuena at [Easter.Almuena@gmail.com](mailto:Easter.Almuena@gmail.com) no later than December 31st.

**SAINT FOR THE WEEK**

Compassion, my dear Brother, is preferable to cleanliness. Reflect that with a little soap I can easily clean my bed covers, but even with a torrent of tears I would never wash from my soul the stain that my harshness toward the unfortunate would create.

**St. Martin de Porres** (1579 - 1639), Religious Brother, Feast Day November 3<sup>rd</sup>